



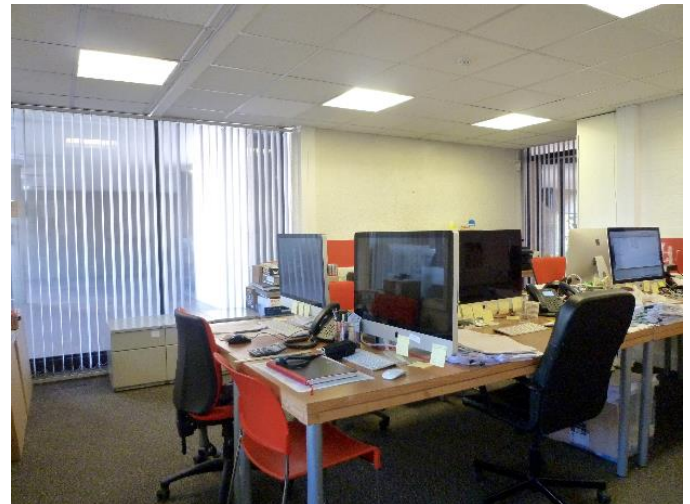
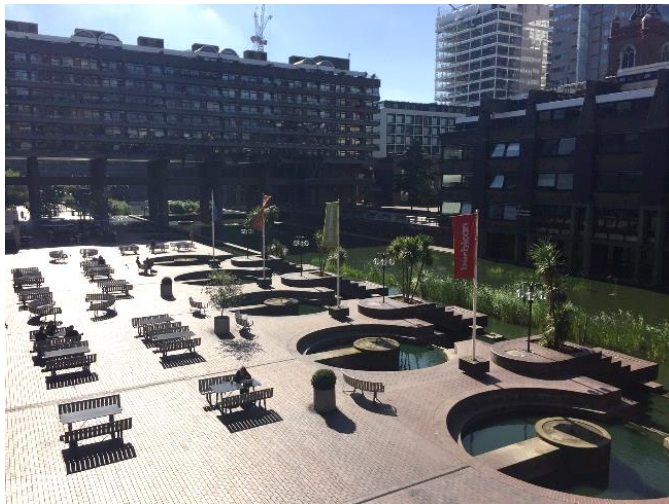
0207 491 0207

**JONES  
NORRIS  
ADAMS**

CHARTERED SURVEYORS

## JOHN TRUNDLE COURT BARBICAN, EC2Y

865 ft<sup>2</sup> (80.36 m<sup>2</sup>)



### Location

The property is located just off Aldersgate Street. Excellent transport links serve the property with Barbican Station directly opposite (Circle, Metropolitan and Hammersmith & City lines). St Pauls (Central Line) and Moorgate (Northern Line) are also within walking distance.

### Amenities

- Private entrance
- Perimeter trunking
- New comfort cooling
- Private terraces
- New W/C
- New kitchenette
- Good natural light
- Fibre lines available

### Rent

£35.00 psf

### Business Rates

£9.00 psf

### Service Charge

Nil

### Lease

Sub-lease, expiring March 2021

### EPC

**D** 76-100

### Viewings

Georgia Eckert  
020 7491 0207  
georgia.eckert@jnaproperty.com