



0207 491 0207

**JONES  
NORRIS  
ADAMS**

CHARTERED SURVEYORS

## SHOP TO LET

Approx. 675 ft<sup>2</sup>

Unit E Rathbone Market • Canning Town • E16

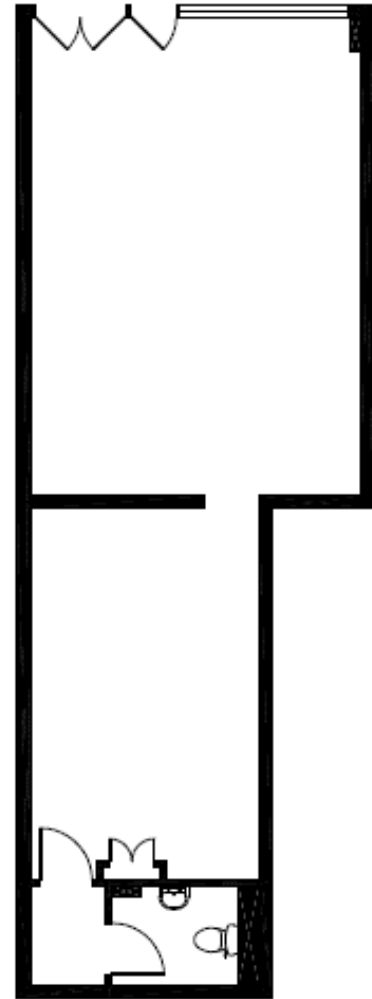


### LOCATION

The property is located on the southern side of Barking Road, approximately 300 metres due east from Canning Town station. It is situated in the middle of a well-established retail parade with high footfall. Nearby occupiers include Savers, Co-op and Domino's Pizza.

### DESCRIPTION

The Property consists of a ground floor lock up retail unit. It benefits from a fully glazed frontage, providing excellent natural light into an open plan retail area. There is a single WC facility at the rear of the unit. The unit is in the process of being stripped out.



GROUND FLOOR

## ACCOMMODATION

The property has the following internal floor areas: -

**TOTAL**                      **675 ft<sup>2</sup>**                      **62.68 m<sup>2</sup>**

## PLANNING

Class E Use

## LEASE

By way of a new full (effective) repairing and insuring Lease.

Terms to be agreed.

## RENT

£22,500 per annum exclusive

## BUSINESS RATES

2017 Rateable Value:                      £10,500

We recommend you verify the Rates Payable with the London Borough of Newham.

## EPC

Being prepared

## VIEWING

Victoria Redcliffe                      07540 180 611  
victoria.redcliffe@jnaproperty.com

Ian Norris                      07738 217 843  
ian.norris@jnaproperty.com